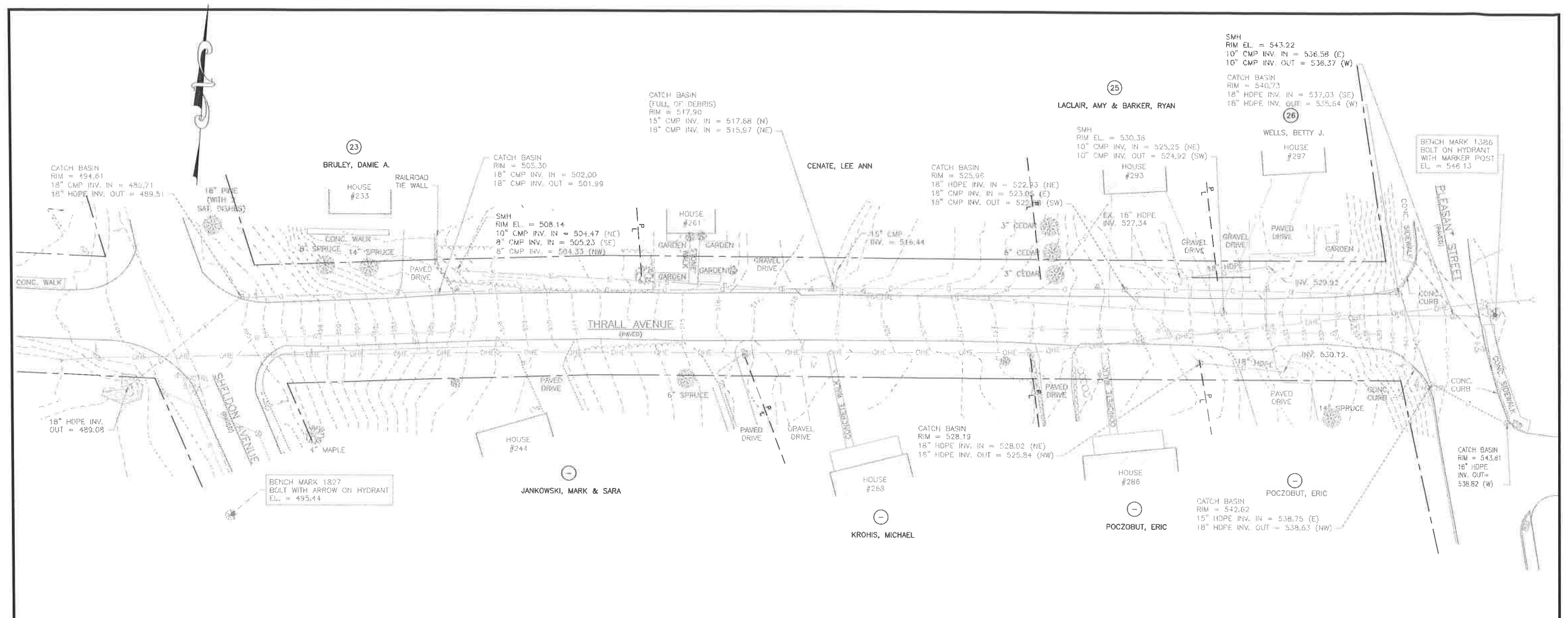


I:\423554 West Rutland Sidewalk\Thrall Ave\dwg\423554\_THRALL\_SP01.dwg 1/24/2020 4:09 PM



SMH  
RIM EL = 543.22  
10" CMP INV. IN = 536.58 (E)  
10" CMP INV. OUT = 536.37 (W)

CATCH BASIN  
RIM = 540.73  
18" HDPE INV. IN = 537.03 (SE)  
18" HDPE INV. OUT = 535.64 (W)

BENCH MARK 1827  
BOLT WITH ARROW ON HYDRANT  
EL = 495.44

BENCH MARK 1386  
BOLT ON HYDRANT  
WITH MARKER POST  
EL = 546.13

CATCH BASIN  
(FULL OF DEBRIS)  
RIM = 517.90  
15" CMP INV. IN = 517.68 (N)  
18" CMP INV. IN = 515.97 (NE)

CATCH BASIN  
RIM = 505.30  
18" CMP INV. IN = 502.00  
18" CMP INV. OUT = 501.99

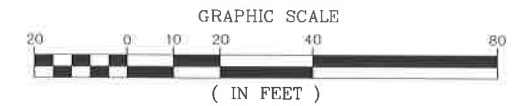
SMH  
RIM EL = 508.14  
10" CMP INV. IN = 504.47 (NE)  
8" CMP INV. IN = 505.23 (SE)  
8" CMP INV. = 504.33 (NW)

CATCH BASIN  
RIM = 525.96  
18" HDPE INV. IN = 522.83 (NE)  
18" CMP INV. IN = 523.05 (E)  
18" CMP INV. OUT = 522.11 (SW)

CATCH BASIN  
RIM = 528.19  
18" HDPE INV. IN = 528.02 (NE)  
18" HDPE INV. OUT = 525.84 (NW)

CATCH BASIN  
RIM = 542.62  
15" HDPE INV. IN = 538.75 (E)  
18" HDPE INV. OUT = 538.63 (NW)

CATCH BASIN  
RIM = 543.81  
16" HDPE  
INV. OUT = 538.82 (W)



PROJECT CONTROL COORDINATE TABLE			
POINT	NORTHING	EASTING	ELEVATION
HVCTRL 3	401177.37	1496429.76	542.20
HVCTRL 4	401099.24	1496211.02	519.35
HVCTRL 51	400930.26	1495980.08	493.41
BENCHMARK 1386	401218.92	1496443.41	546.13
BENCHMARK 1827	400890.17	149627.03	495.44

NO.	DATE	DESCRIPTION	BY	CK'D



PROJECT NAME: WEST RUTLAND SIDEWALK SEGMENTS  
PROJECT NUMBER: STP BP15(1)

FILE NAME: 423554\_THRALL\_SP01.dwg  
PROJECT LEADER: LDC  
DESIGNED BY: MAM  
TH-1.1 THRALL AVE. EXISTING CONDITIONS

PLOT DATE: 1/24/2020  
DRAWN BY:  
CHECKED BY: LDC  
SHEET 50 OF 76

**CURVE NO. 1**  
 PI STA. 100+38.86  
 $\Delta = 105^{\circ}01'20''$  LT  
 $D = 358^{\circ}06'00''$   
 $R = 16.00$   
 $T = 20.86$   
 $L = 29.33$   
 $E = 10.29$

**CURVE NO. 2**  
 PI STA. 101+00.20  
 $\Delta = 72^{\circ}20'00''$  LT  
 $D = 150^{\circ}46'40''$   
 $R = 38.00$   
 $T = 27.78$   
 $L = 47.97$   
 $E = 9.07$

**CURVE NO. 3**  
 PI STA. 102+37.29  
 $\Delta = 2^{\circ}00'00''$  LT  
 $D = 3^{\circ}47'50''$   
 $R = 1509.00$   
 $T = 26.35$   
 $L = 52.69$   
 $E = 0.23$

**CURB BASELINE COORDINATE TABLE**

STATION	NORTHING	EASTING
PB: 100+00.00	400936.55	1495917.87
PC: 100+18.00	400944.51	1495934.02
PT: 100+47.33	400969.4100	1495938.98
PI: 100+48.34	400970.17	1495938.31
PC: 100+71.38	400982.68	1495959.66
PT: 100+72.42	400981.99	1495958.44
PI: 101+20.39	400977.84	1496003.10
PC: 102+10.94	401024.28	1496080.84
PT: 102+63.63	401050.50	1496126.53
PI: 105+45.25	401186.40	1496373.19
PT: 105+58.53	401192.73	1496384.86
PC: 105+70.38	401198.31	1496395.32
PT: 106+04.91	401227.99	1496401.87
EP: 106+35.00	401252.02	1496383.76

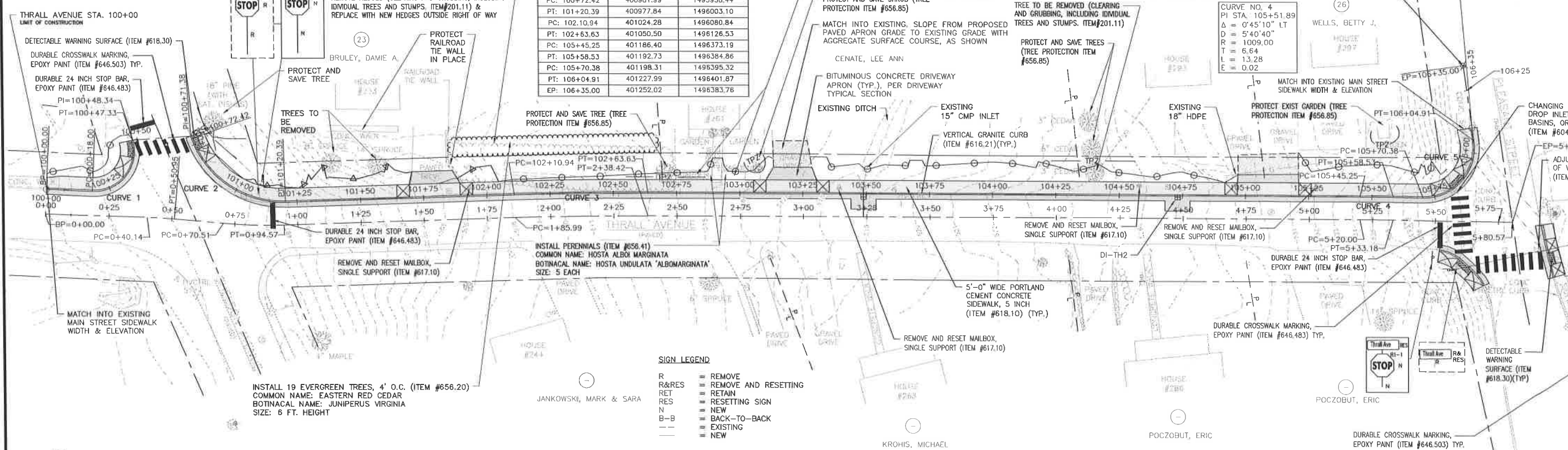
**VERTICAL GRANITE CURB**  
 STA 100+00 - STA 100+50  
 STA 100+71 - STA 106+10  
 STA 105+74(21'R) - STA 105+79(40'R)  
 STA 105+90(36'R) - STA 105+85(80'R)

**PORTLAND CEMENT CONCRETE SIDEWALK, 5 INCH**  
 STA 100+00 - STA 100+50  
 STA 100+71 - STA 106+10  
 STA 105+74(21'R) - STA 105+79(40'R)  
 STA 105+90(36'R) - STA 105+85(80'R)

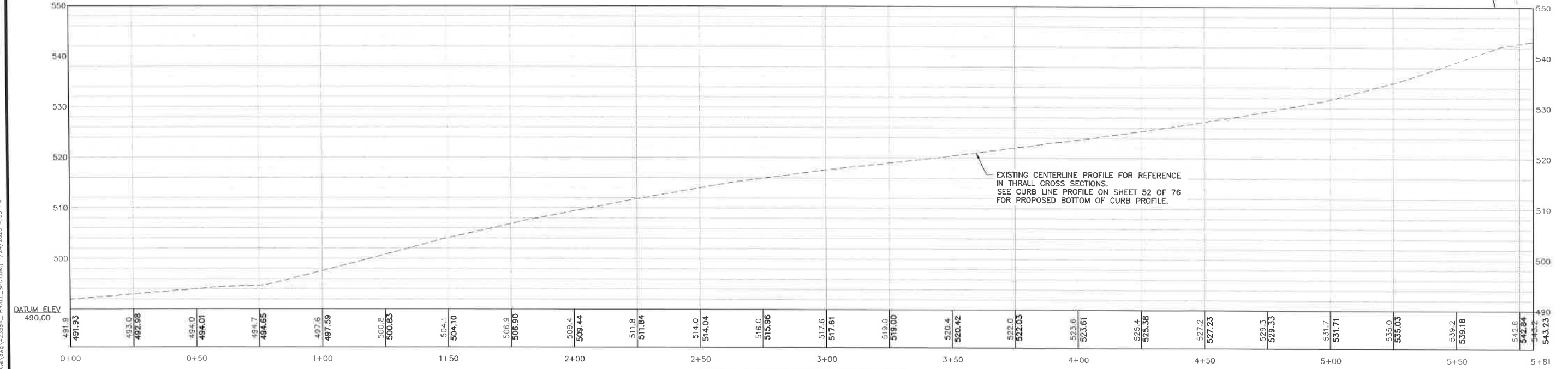
**DETECTABLE WARNING SURFACE**  
 STA 100+44  
 STA 100+74  
 STA 105+86  
 STA 105+77(29'R)  
 STA 105+88(46'R)  
 STA 105+85(76'R)

**THRALL AVENUE STA. 106+10**  
 LIMIT OF CONSTRUCTION  
 ALIGNMENT=THRALL EOP L  
 STATION=106+35.00  
 OFFSET=0.00  
 NORTHING=401252.02  
 EASTING=1496383.76

**CURVE NO. 5**  
 PI STA. 105+93.76  
 $\Delta = 98^{\circ}54'40''$  LT  
 $D = 286^{\circ}28'40''$   
 $R = 20.00$   
 $T = 23.38$   
 $L = 34.53$   
 $E = 10.77$



- SIGN LEGEND**
- R = REMOVE
  - R&RES = REMOVE AND RESETTING
  - RET = RETAIN
  - RES = RESETTING SIGN
  - N = NEW
  - B-B = BACK-TO-BACK
  - = EXISTING
  - = NEW



**THRALL AVENUE CENTERLINE PROFILE**

- NOTES:**
- ALL SIDEWALK RAMPS SHALL BE TYPE 1, EXAMPLE 2 PER STANDARD C-3A, UNLESS OTHERWISE INDICATED.
  - ALL DRIVEWAYS WITH PROPOSED SIDEWALK SHALL BE TYPE 6, PER STANDARD C-2B, UNLESS OTHERWISE INDICATED.
  - ALL DRIVEWAYS DISTURBED BY THE PROPOSED SIDEWALK SHALL FOLLOW THE TYPE 7 - PARALLEL CROSSING WITH LANDING" AS SHOWN ON VTRANS STANDARD DRAWING C-2B, UNLESS OTHERWISE INDICATED.

NO.	DATE	DESCRIPTION	BY	CK'D

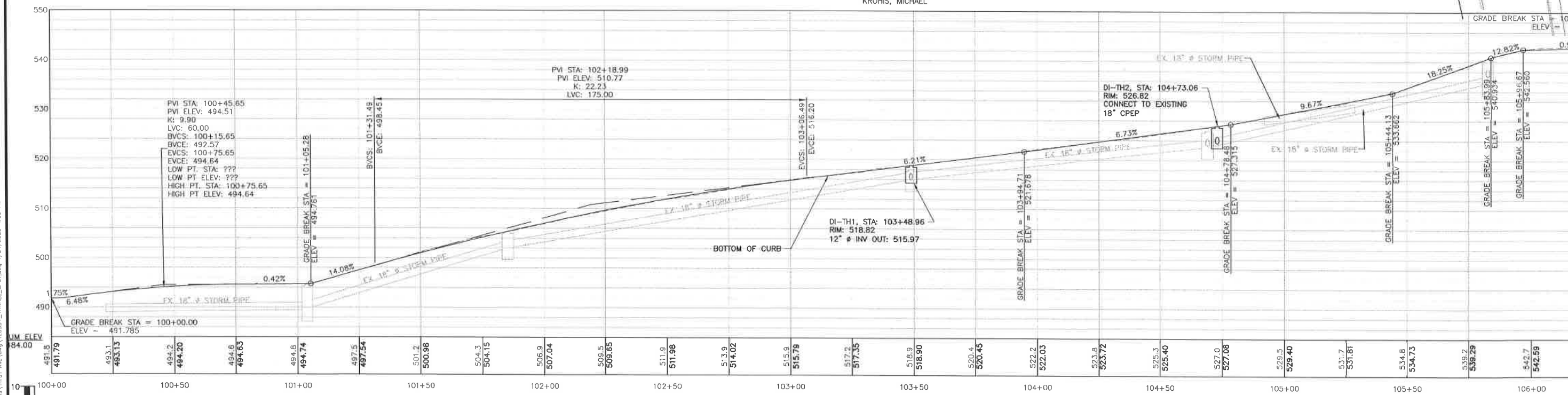
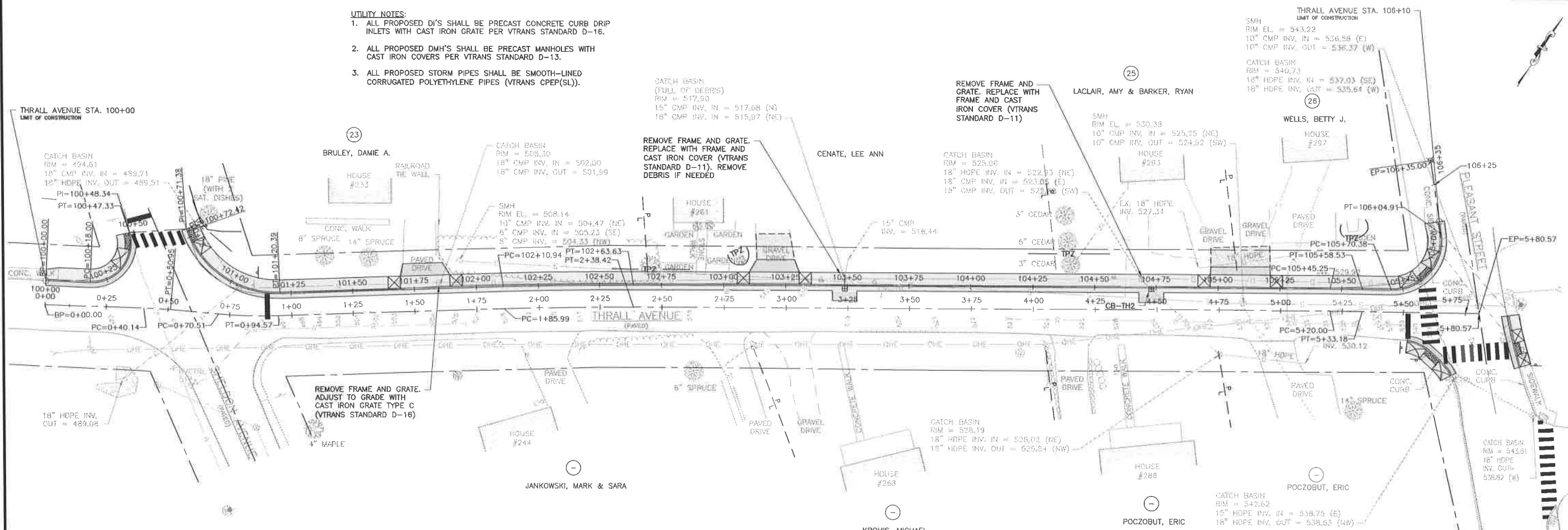


PROJECT NAME: WEST RUTLAND SIDEWALK SEGMENTS  
 PROJECT NUMBER: STP BP15(1)  
 FILE NAME: 423554\_THRALL\_SPO1.dwg  
 PROJECT LEADER: LDC  
 DESIGNED BY: MAM  
 TH-2.1 THRALL AVE. SITE PLAN & PROFILE

PLOT DATE: 1/24/2020  
 DRAWN BY:  
 CHECKED BY: LDC  
 SHEET 51 OF 76

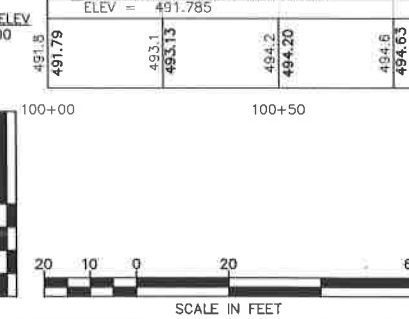
I:\4\423554 West Rutland Sidewalks\Thrall Ave\Drawn\423554\_THRALL\_SPO1.dwg 1/24/2020 4:09 PM

- UTILITY NOTES:**
1. ALL PROPOSED D'S SHALL BE PRECAST CONCRETE CURB DRIP INLETS WITH CAST IRON GRATE PER VTRANS STANDARD D-16.
  2. ALL PROPOSED DMH'S SHALL BE PRECAST MANHOLES WITH CAST IRON COVERS PER VTRANS STANDARD D-13.
  3. ALL PROPOSED STORM PIPES SHALL BE SMOOTH-LINED CORRUGATED POLYETHYLENE PIPES (VTRANS CPEP(SL)).



THRALL CURB-LINE PROFILE

I:\423554\West Rutland Sidewalk\Thrall Ave\423554\_THRALL\_SPO1.dwg 1/24/2020 4:08 PM









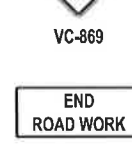
NO.	DATE	DESCRIPTION	BY	CK'D

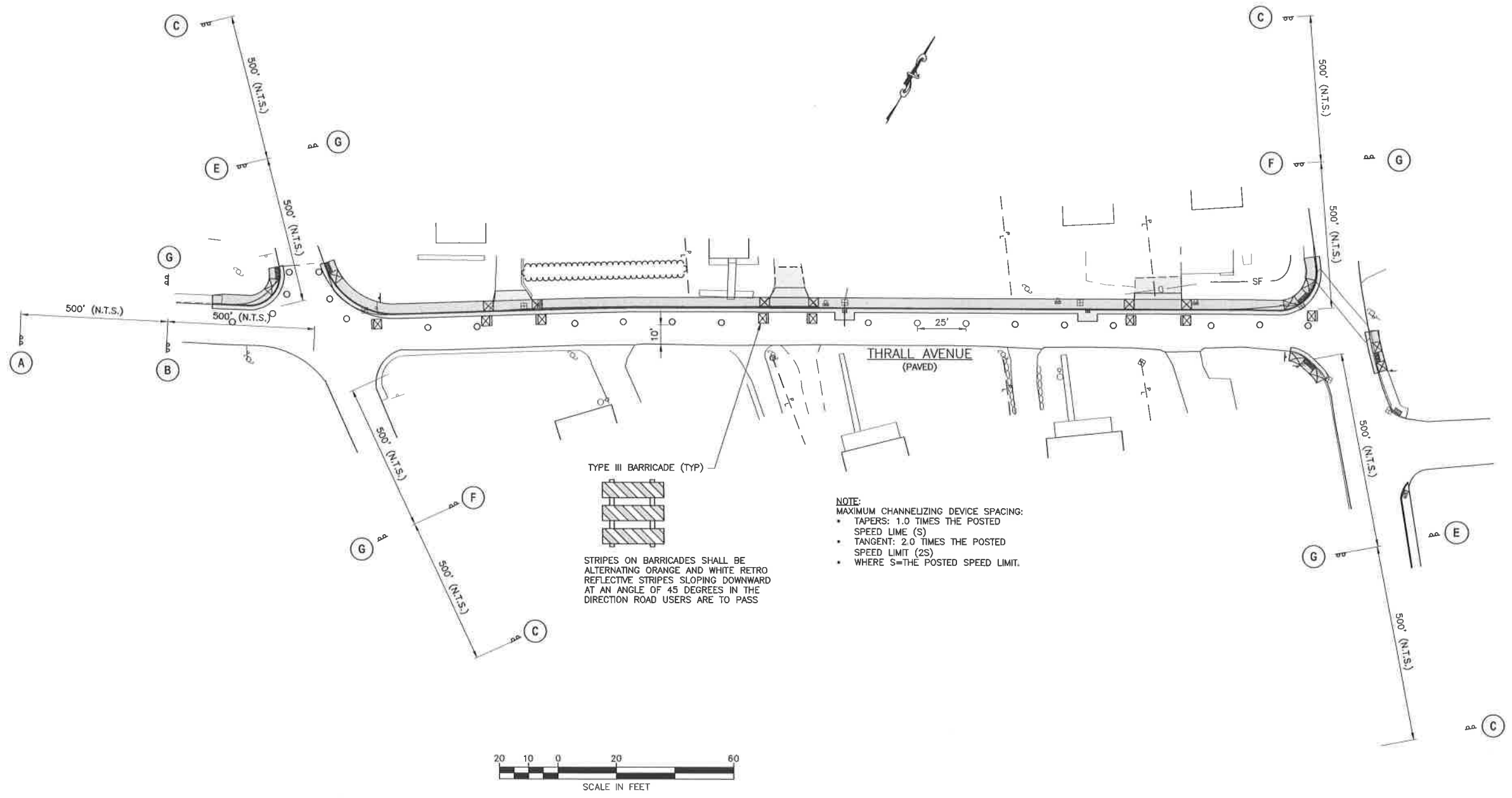


PROJECT NAME: WEST RUTLAND SIDEWALK SEGMENTS  
 PROJECT NUMBER: STP BP15(1)  
 FILE NAME: 423554\_THRALL\_SPO1.dwg  
 PROJECT LEADER: LDC  
 DESIGNED BY: MAM  
 TH-2.2 THRALL AVE. DRAINAGE PLAN

PLOT DATE: 1/24/2020  
 DRAWN BY:  
 CHECKED BY: LDC  
 SHEET 52 OF 76

**SIGNAGE LEGEND**

- (A)  ROAD WORK AHEAD  
W20-1
- (B)  ROAD WORK 500 FT  
W20-1
- (C)  SIDE ROAD WORK AHEAD  
VC-869
- (D)  SIDE ROAD WORK 500 FT  
VC-869
- (E)  SIDE ROAD WORK LEFT  
VC-869
- (F)  SIDE ROAD WORK RIGHT  
VC-869
- (G)  END ROAD WORK  
G20-2



TYPE III BARRICADE (TYP)



STRIPES ON BARRICADES SHALL BE ALTERNATING ORANGE AND WHITE RETRO REFLECTIVE STRIPES SLOPING DOWNWARD AT AN ANGLE OF 45 DEGREES IN THE DIRECTION ROAD USERS ARE TO PASS

NOTE:  
 MAXIMUM CHANNELIZING DEVICE SPACING:  
 • TAPERS: 1.0 TIMES THE POSTED SPEED LIMIT (S)  
 • TANGENT: 2.0 TIMES THE POSTED SPEED LIMIT (2S)  
 • WHERE S=THE POSTED SPEED LIMIT.

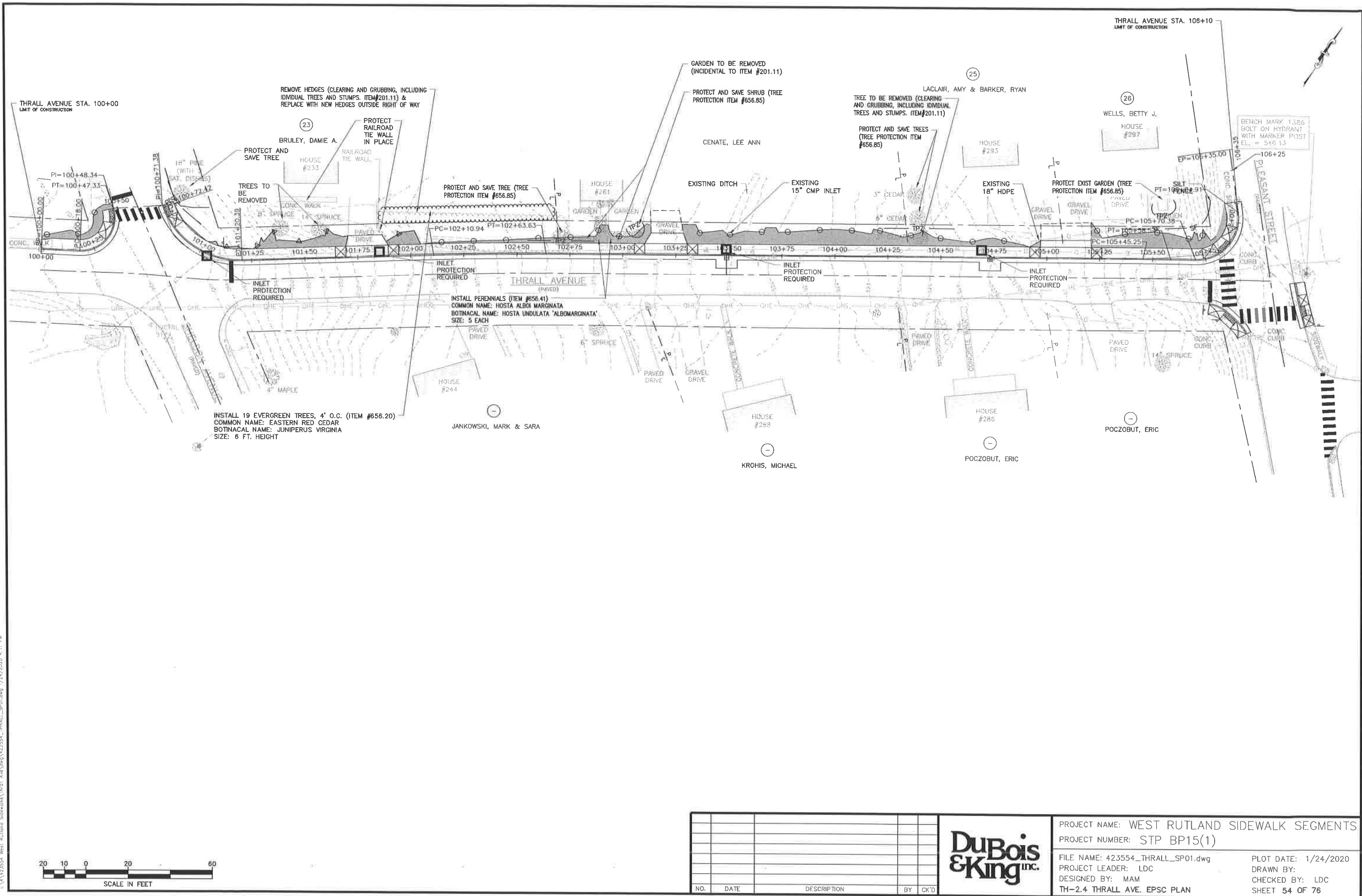
L:\4123554 West Rutland Sidewalks\Thrall Ave.dwg\4123554\_THRALL\_TC.dwg 1/24/2020 4:10 PM

NO.	DATE	DESCRIPTION	BY	CK'D

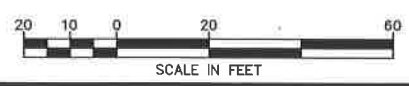


PROJECT NAME: WEST RUTLAND SIDEWALK SEGMENTS  
 PROJECT NUMBER: STP BP15(1)  
 FILE NAME: 423554\_THRALL\_TC.dwg  
 PROJECT LEADER: LDC  
 DESIGNED BY: MAM  
 TH-2.3 THRALL AVE. TRAFFIC CONTROL PLAN

PLOT DATE: 1/24/2020  
 DRAWN BY:  
 CHECKED BY: LDC  
 SHEET 53 OF 76



I:\V\133554 - West Rutland Sidewalks\Drawings\423554\_Thrall\_SP01.dwg 1/24/2020 4:11 PM

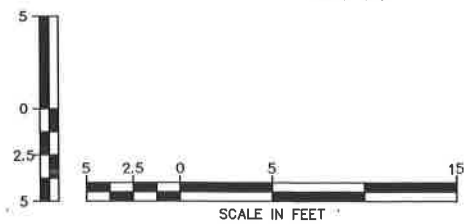
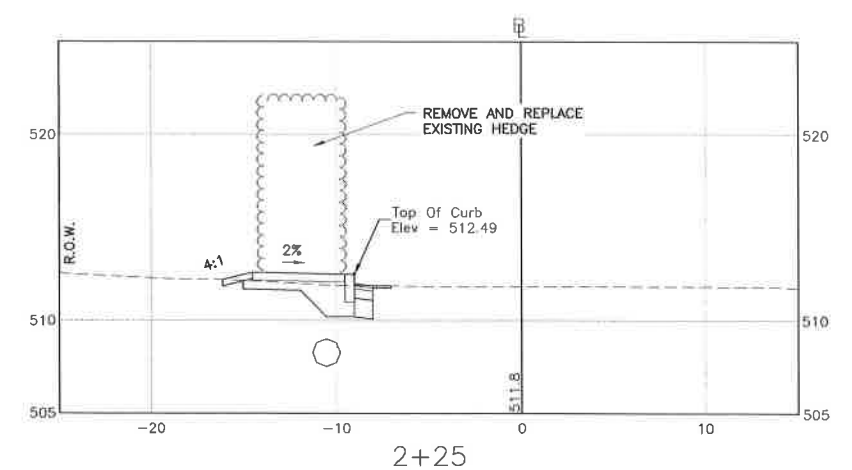
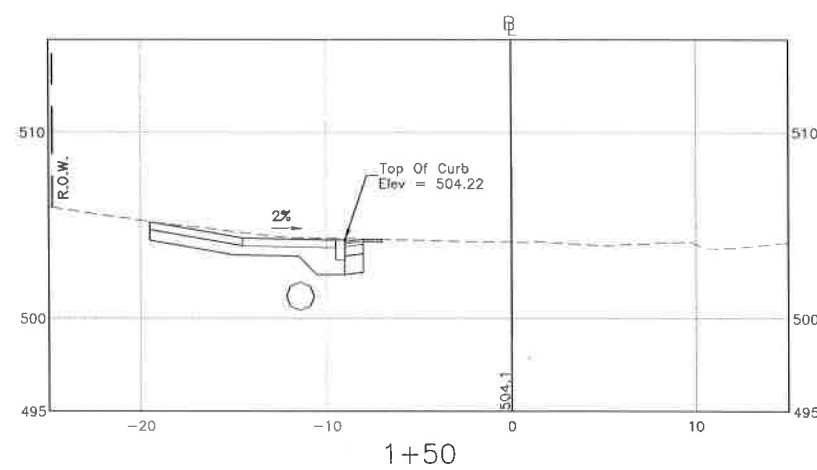
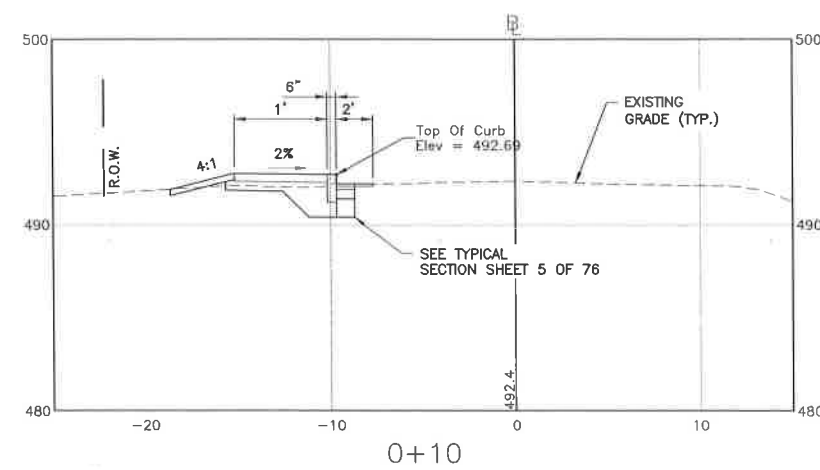
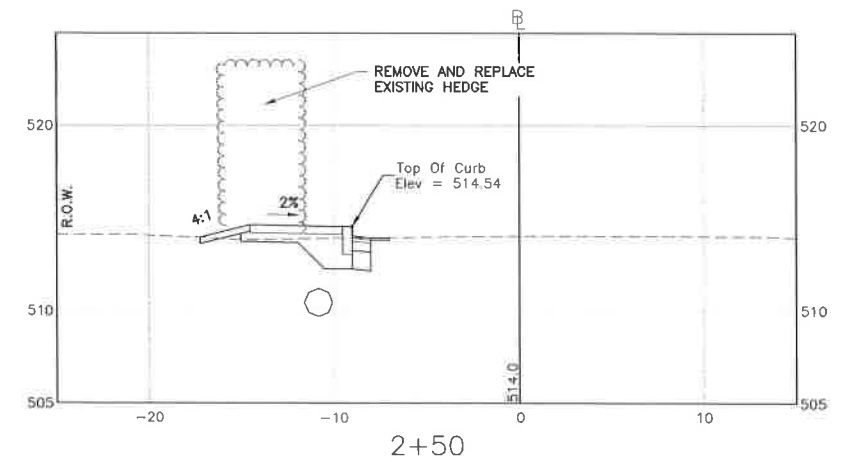
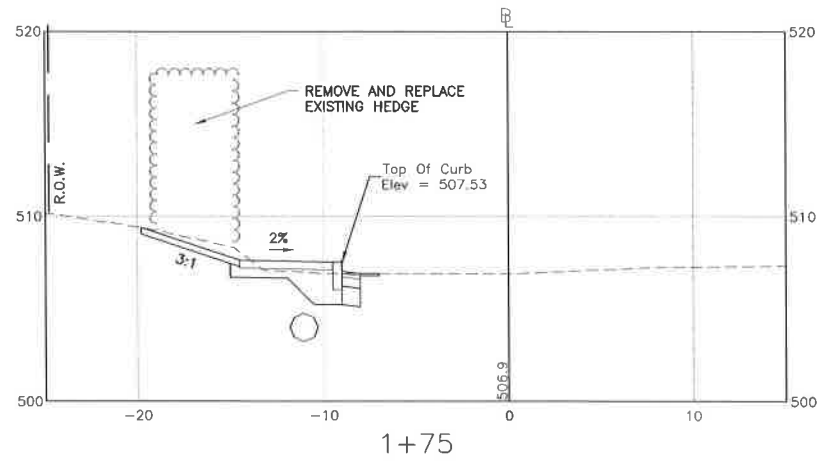
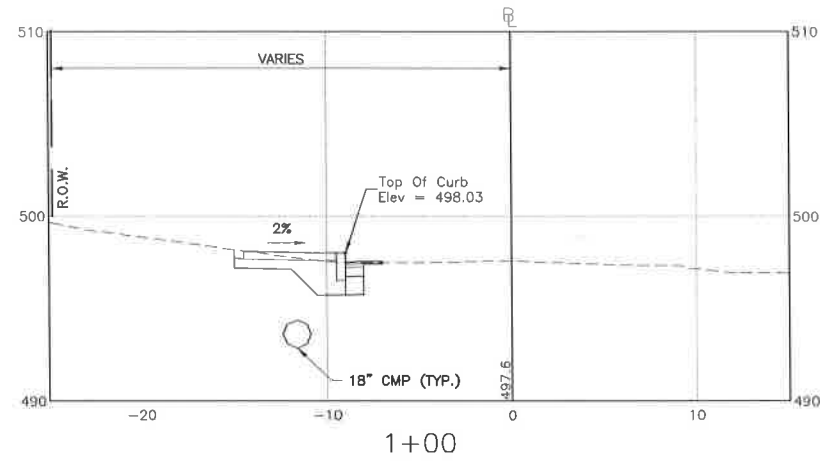
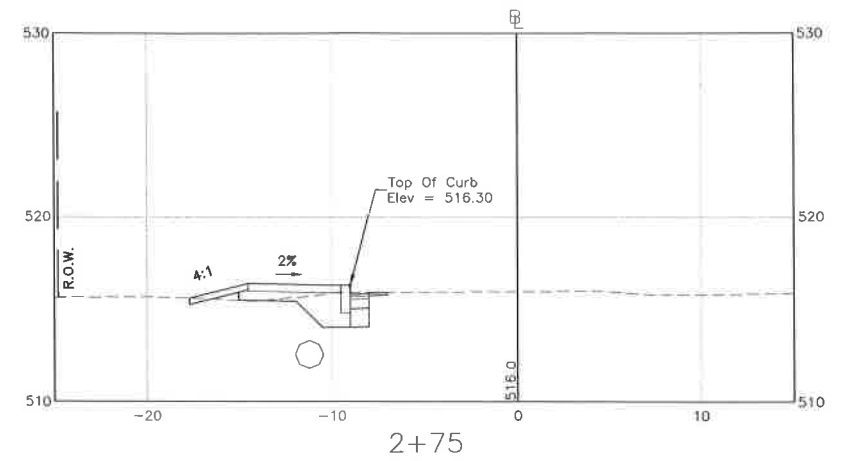
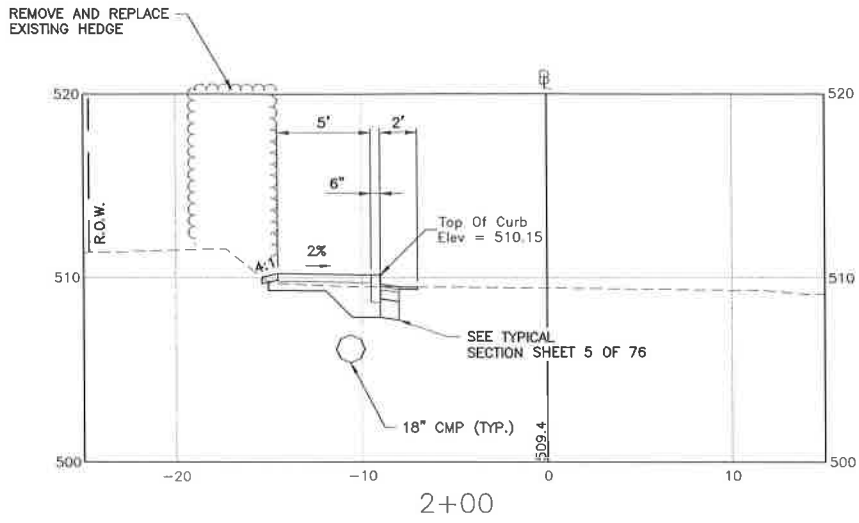
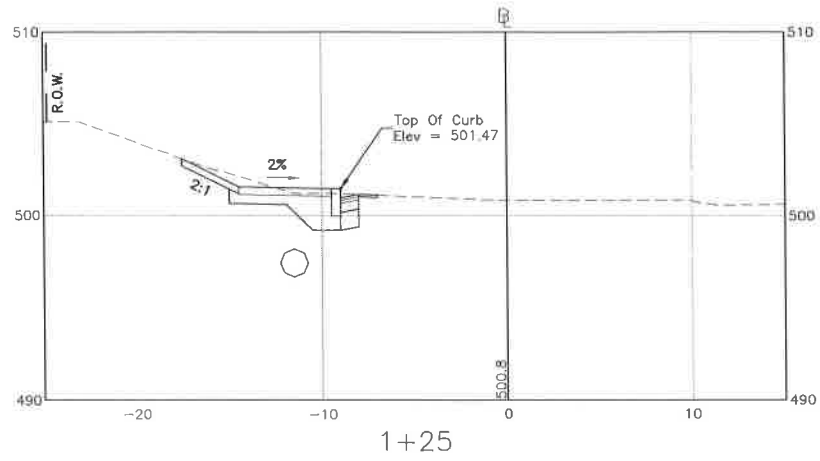


NO.	DATE	DESCRIPTION	BY	CHK'D



PROJECT NAME: WEST RUTLAND SIDEWALK SEGMENTS  
 PROJECT NUMBER: STP BP15(1)  
 FILE NAME: 423554\_THRALL\_SP01.dwg  
 PROJECT LEADER: LDC  
 DESIGNED BY: MAM  
 TH-2.4 THRALL AVE. EPSC PLAN

PLOT DATE: 1/24/2020  
 DRAWN BY:  
 CHECKED BY: LDC  
 SHEET 54 OF 76

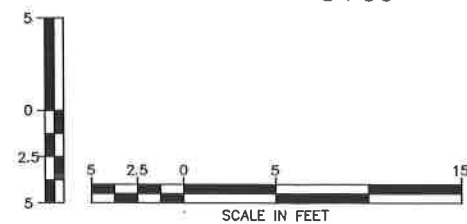
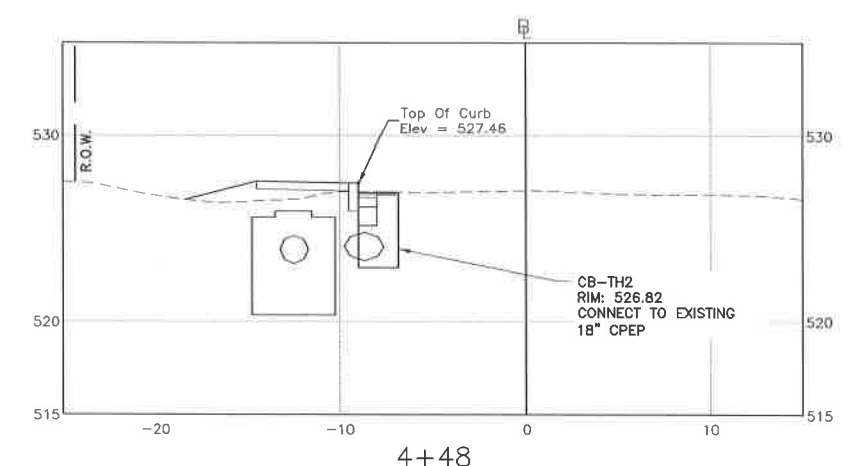
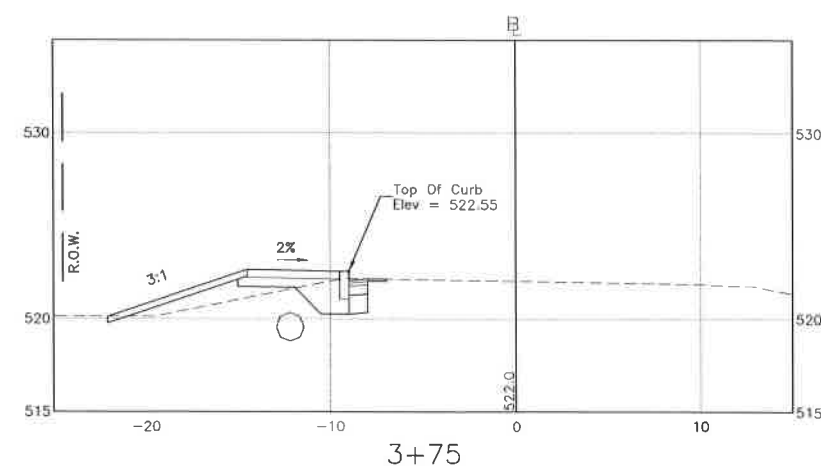
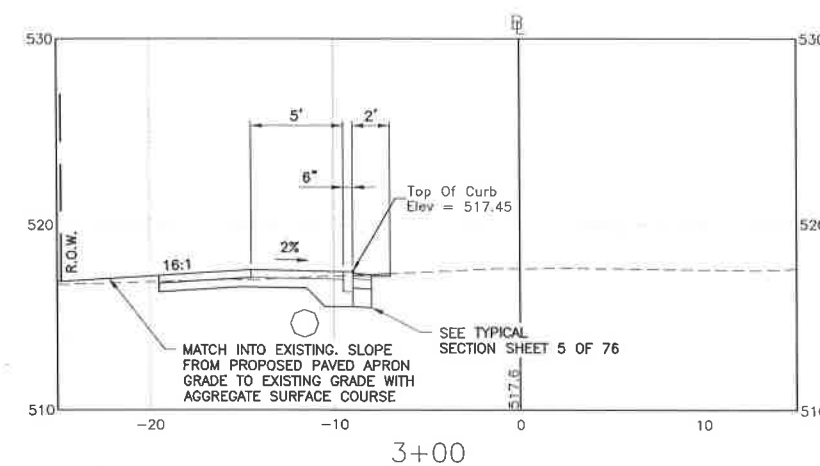
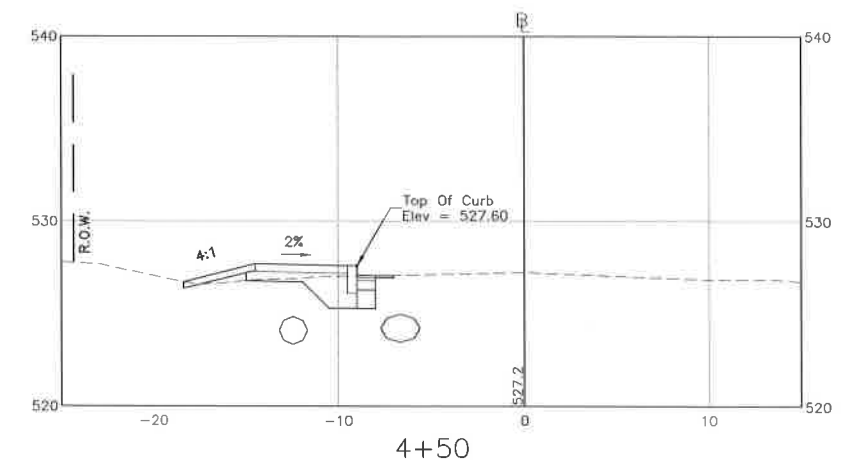
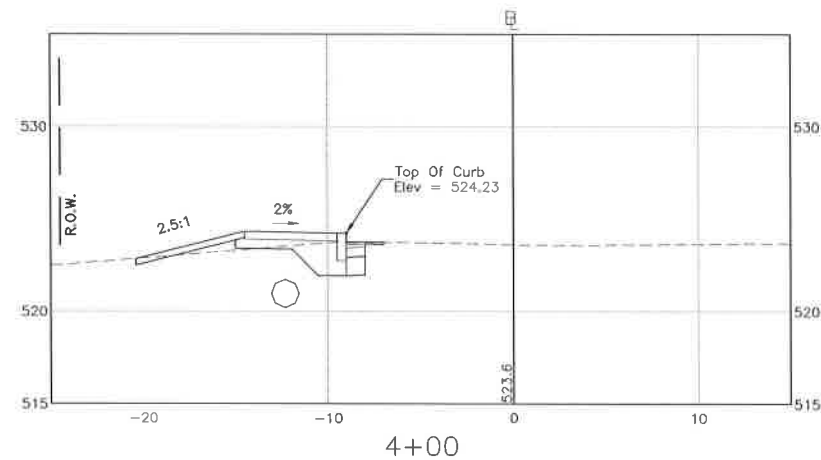
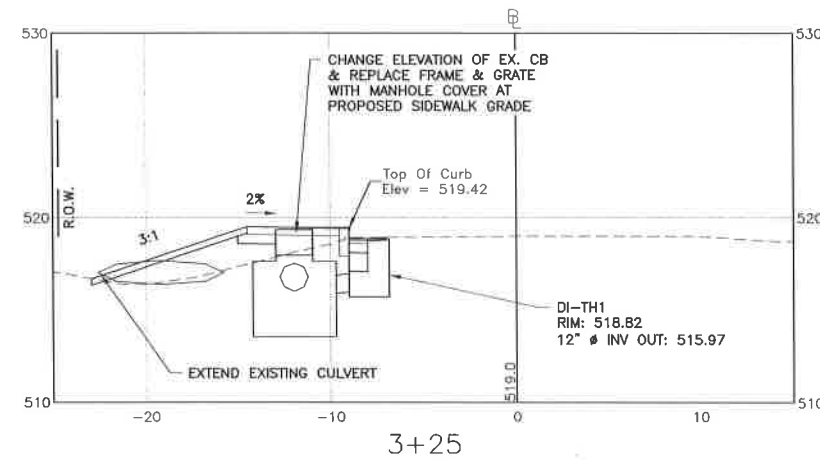
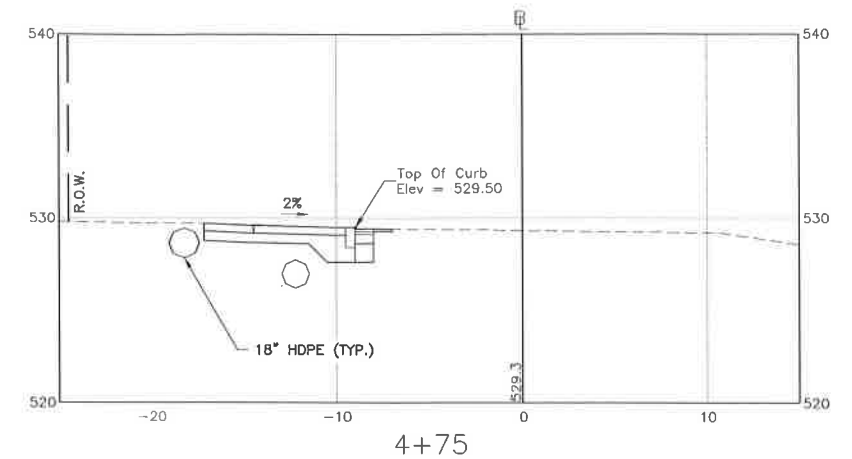
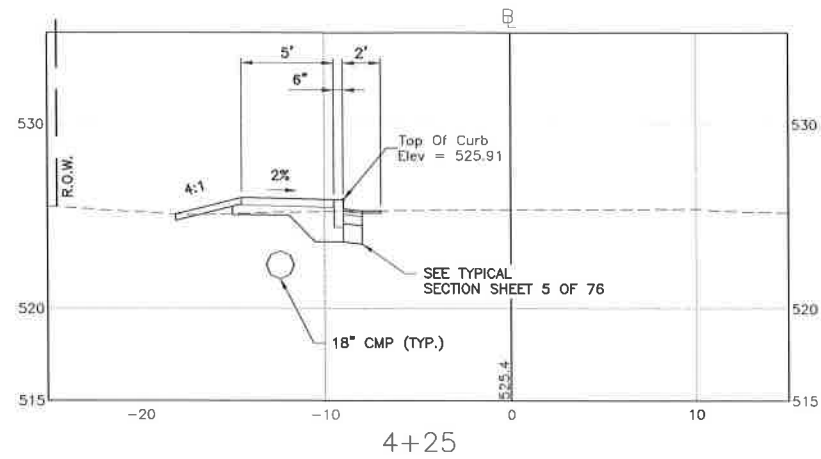
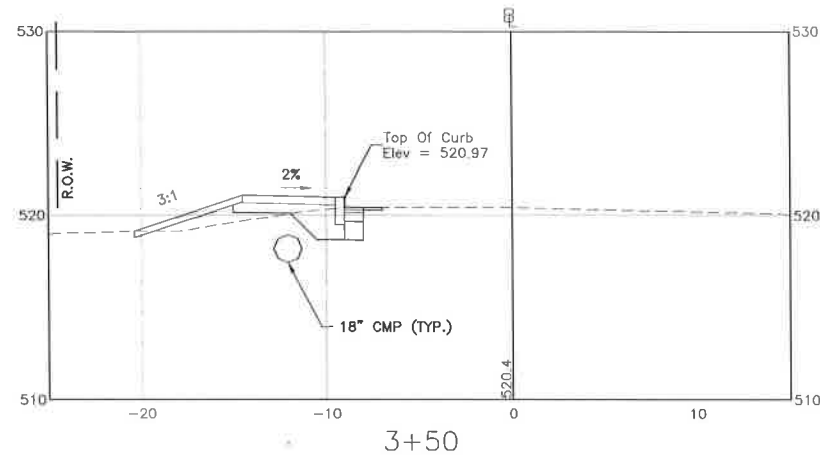


NO.	DATE	DESCRIPTION	BY	CK'D



PROJECT NAME: WEST RUTLAND SIDEWALK SEGMENTS  
 PROJECT NUMBER: STP BP15(1)  
 FILE NAME: 423554\_THRALL\_SP01.dwg  
 PROJECT LEADER: LDC  
 DESIGNED BY: MAM  
 TH-4.1 THRALL AVE. CROSS SECTIONS

PLOT DATE: 1/24/2020  
 DRAWN BY:  
 CHECKED BY: LDC  
 SHEET 55 OF 76

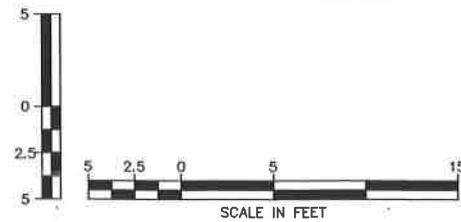
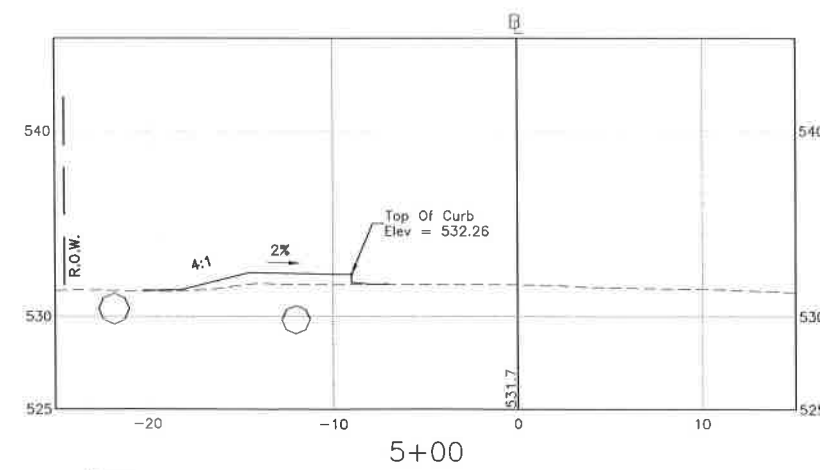
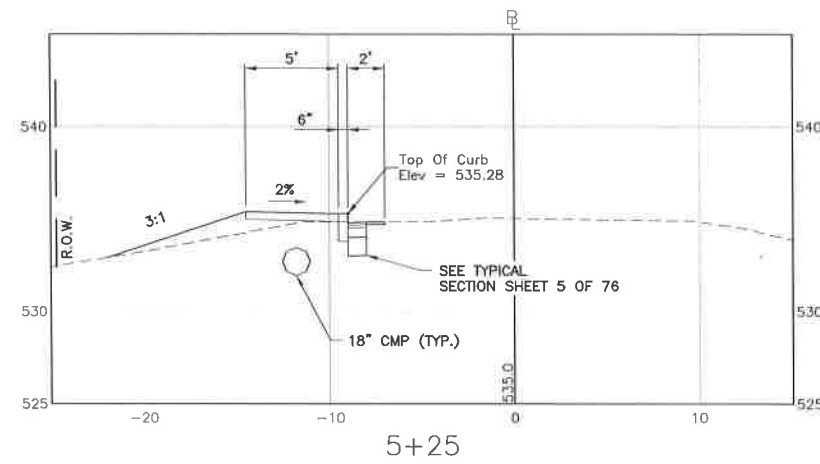
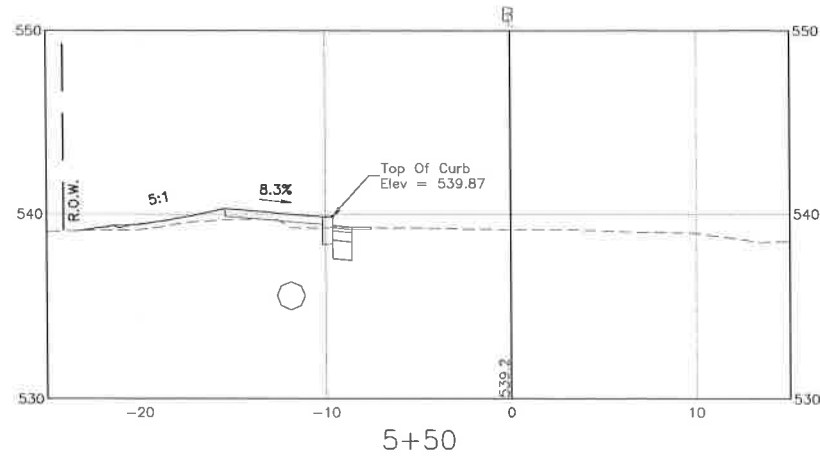


NO.	DATE	DESCRIPTION	BY	CHK'D



PROJECT NAME: WEST RUTLAND SIDEWALK SEGMENTS  
 PROJECT NUMBER: STP BP15(1)  
 FILE NAME: 423554\_THRALL\_SP01.dwg  
 PROJECT LEADER: LDC  
 DESIGNED BY: MAM  
 TH-4.2 THRALL AVE. CROSS SECTIONS

PLOT DATE: 1/24/2020  
 DRAWN BY:  
 CHECKED BY: LDC  
 SHEET 56 OF 76



NO.	DATE	DESCRIPTION	BY	CK'D

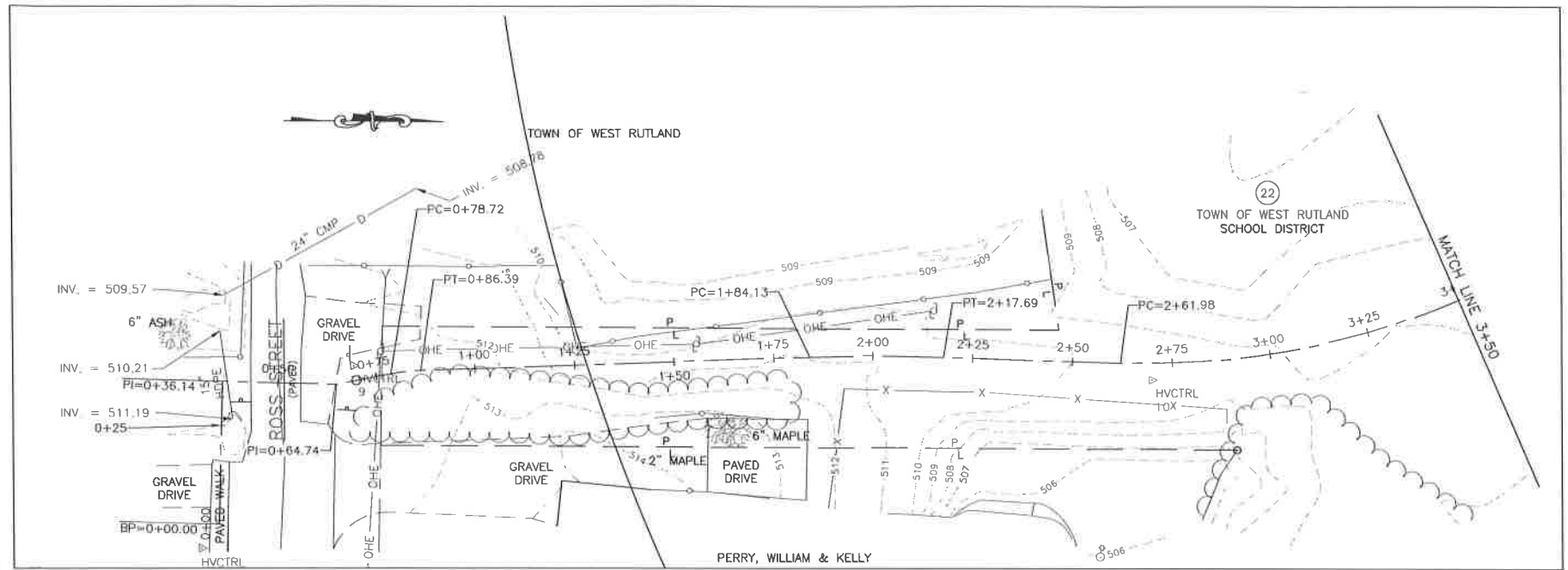


PROJECT NAME: WEST RUTLAND SIDEWALK SEGMENTS  
 PROJECT NUMBER: STP BP15(1)  
 FILE NAME: 423554\_THRALL\_SP01.dwg  
 PROJECT LEADER: LDC  
 DESIGNED BY: MAM  
 TH-4.3 THRALL AVE. CROSS SECTIONS

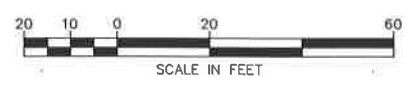
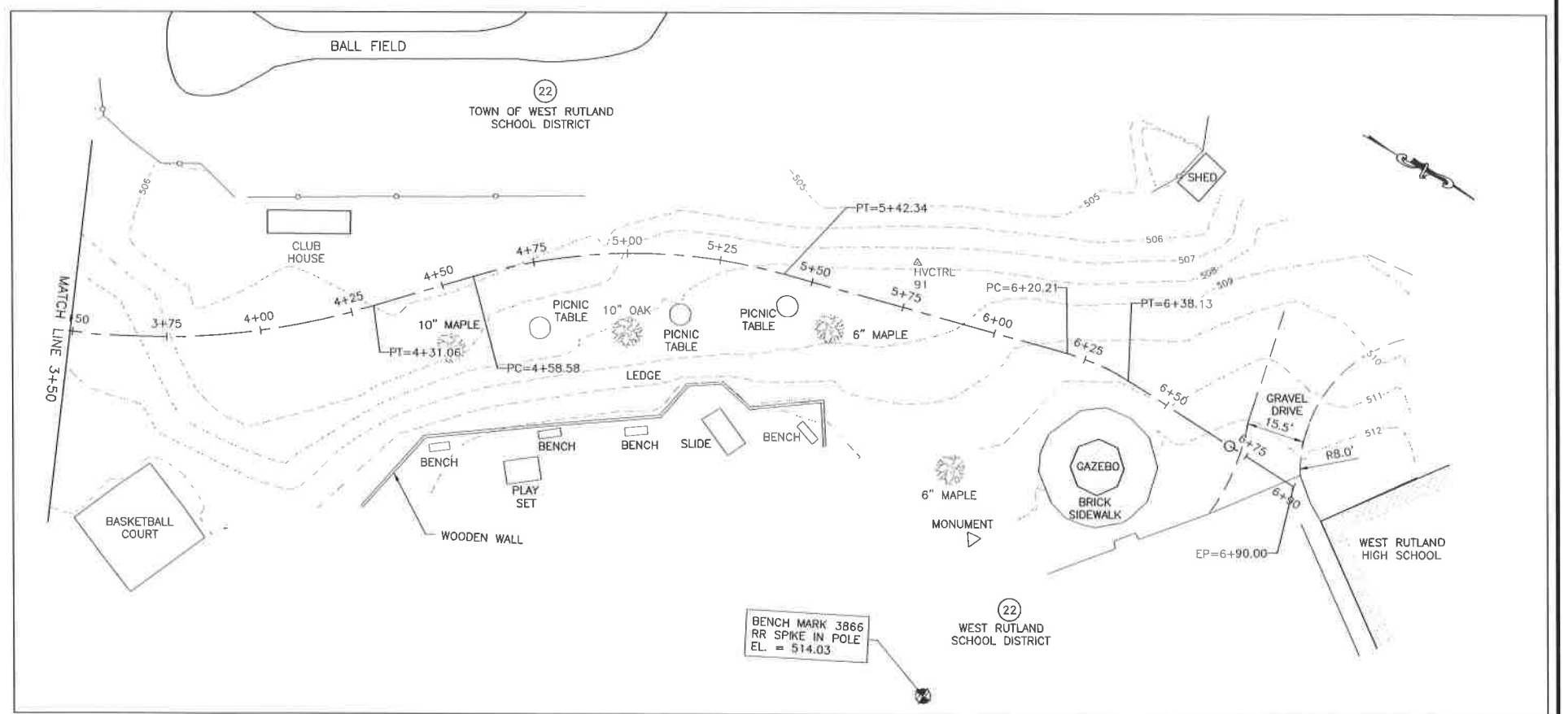
PLOT DATE: 1/24/2020  
 DRAWN BY:  
 CHECKED BY: LDC  
 SHEET 57 OF 76

I:\423554 West Rutland Sidewalks\Thrall Ave\dwg\423554\_THRALL\_SP01.dwg 1/24/2020 4:11 PM





PROJECT CONTROL COORDINATE TABLE			
POINT	NORTHING	EASTING	ELEVATION
HVCTRL 9	399011.98	1494413.96	512.30
HVCTRL 10	399212.26	1494417.26	509.83
HVCTRL 90	398973.51	1494459.89	512.74
HVCTRL 91	399475.17	1494268.21	507.67
BENCHMARK 3447	399004.00	1494616.32	515.73
BENCHMARK 3866	399533.61	1494366.84	514.03



NO.	DATE	DESCRIPTION	BY	CK'D



PROJECT NAME: WEST RUTLAND SIDEWALK SEGMENTS  
 PROJECT NUMBER: STP BP15(1)  
 FILE NAME: 423554\_ROSS\_SP01.dwg  
 PROJECT LEADER: LDC  
 DESIGNED BY: MAM  
 WRS-1.1 HIGH SCHOOL EX. CONDITIONS PLAN

PLOT DATE: 1/24/2020  
 DRAWN BY:  
 CHECKED BY: LDC  
 SHEET 58 OF 76

I:\V\423554 West Rutland Sidewalks\Ross\dwg\423554\_ROSS\_SP01.dwg 1/24/2020 4:12 PM