

MARBLEWAY PATH

STP BP21(14) · WEST RUTLAND · VERMONT

JULY 2023

CONCEPTUAL PLANS

PREPARED FOR
TOWN OF WEST RUTLAND
35 MARBLE ST.
WEST RUTLAND, VT 05777



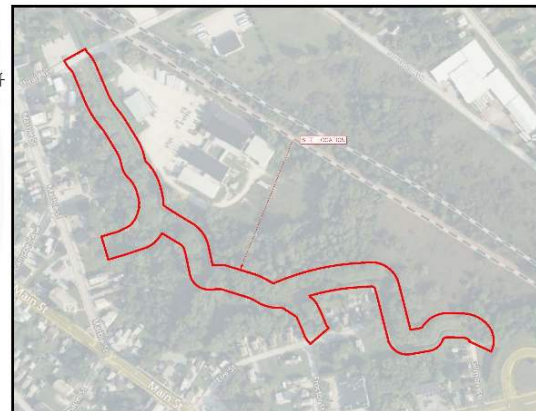
PREPARED BY
FUSS & O'NEILL
215 BELLEVILLE AVENUE, SUITE 400
WEST RUTLAND, VT 05777
802.478.0370
www.fussandoneill.com

RUTLAND REGIONAL PLANNING
COMMISSION
67 MERCHANTS ROW
RUTLAND, VT 05701

VERMONT SURVEY & ENGINEERING, INC.
79 RIVER ST.
MONTPELIER, VT 05602
802.229.9138

SHEET INDEX

SHEET No.	SHEET TITLE
GI - 001	TITLE SHEET
CN - 001	GENERAL NOTES
CS - 100	INDEX MAP
CS - 001	THE PLAN
CS - 1-3	EXISTING CONDITIONS PLAN
CS - 201-203	SITE LAYOUT SHEETS
CG - 101-103	GRADING AND DRAINAGE
CT - 101-103	R.O.W. PLAN
CX - 301-305	CROSS SECTIONS
CD - 500-502	DETAILS



LOCATION MAP
SCALE: 1"=200'

PROJECT No. 2022-00390

DATE: 05/17/23

GI-001

DATE: February 12, 2024

TIME: 5:00 pm

IN-PERSON LOCATION:

West Rutland Town Office
35 Marble Street

JOIN BY ZOOM:

<https://us06web.zoom.us/j/86548955202>

Meeting ID: 865 4895 5202

Call in: 1-646-876-9923

MarbleWay Path Project INFORMATIONAL MEETING

The Town of West Rutland is working with Fuss & O'Neill to develop engineering plans to construct the MarbleWay Path – a multi-use path along the channel between Thrall Avenue and Gilmore Street.

At the Informational Meeting Fuss & O'Neill will provide an overview of the Conceptual Plans for the path.